



SENTINEL Hub

Building the Company Without Having an Exit in Mind

Grega Milcinski

Sinergise/Sentinel Hub

grega.milcinski@sinergise.com



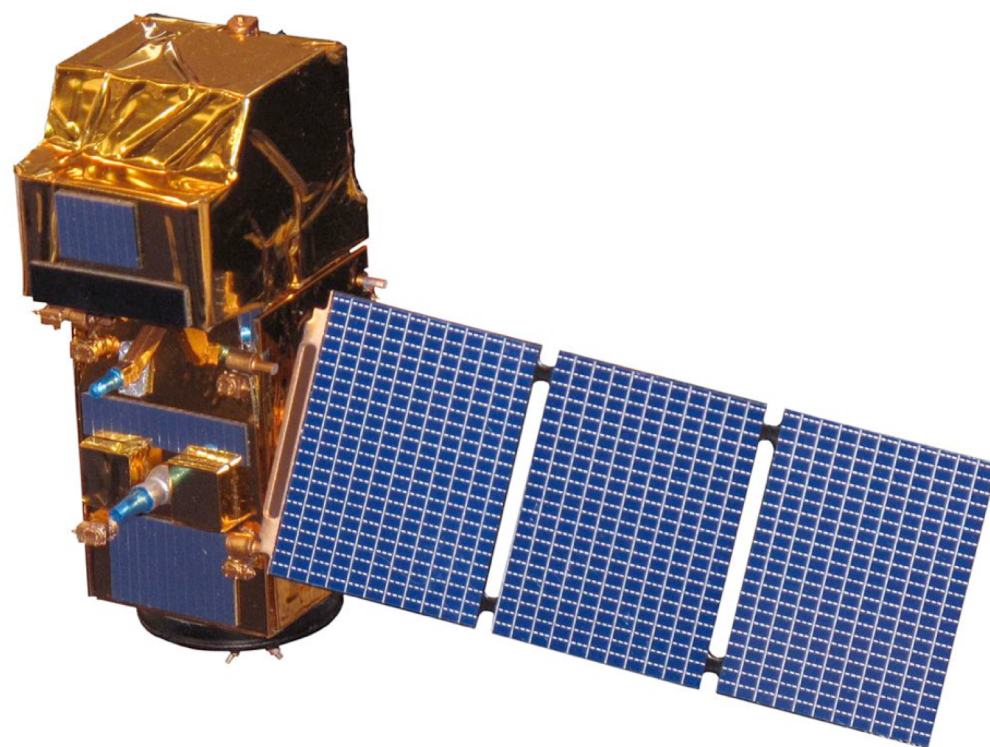
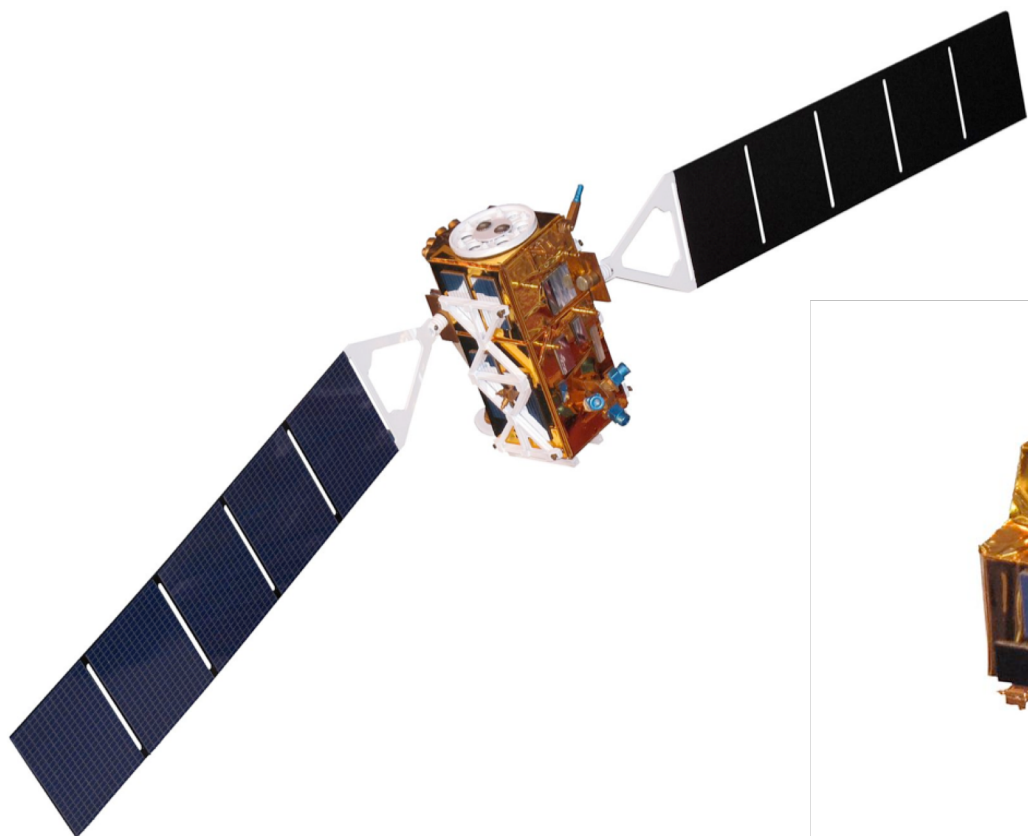
EUROPEAN EO COMPANY
OF THE YEAR 2018

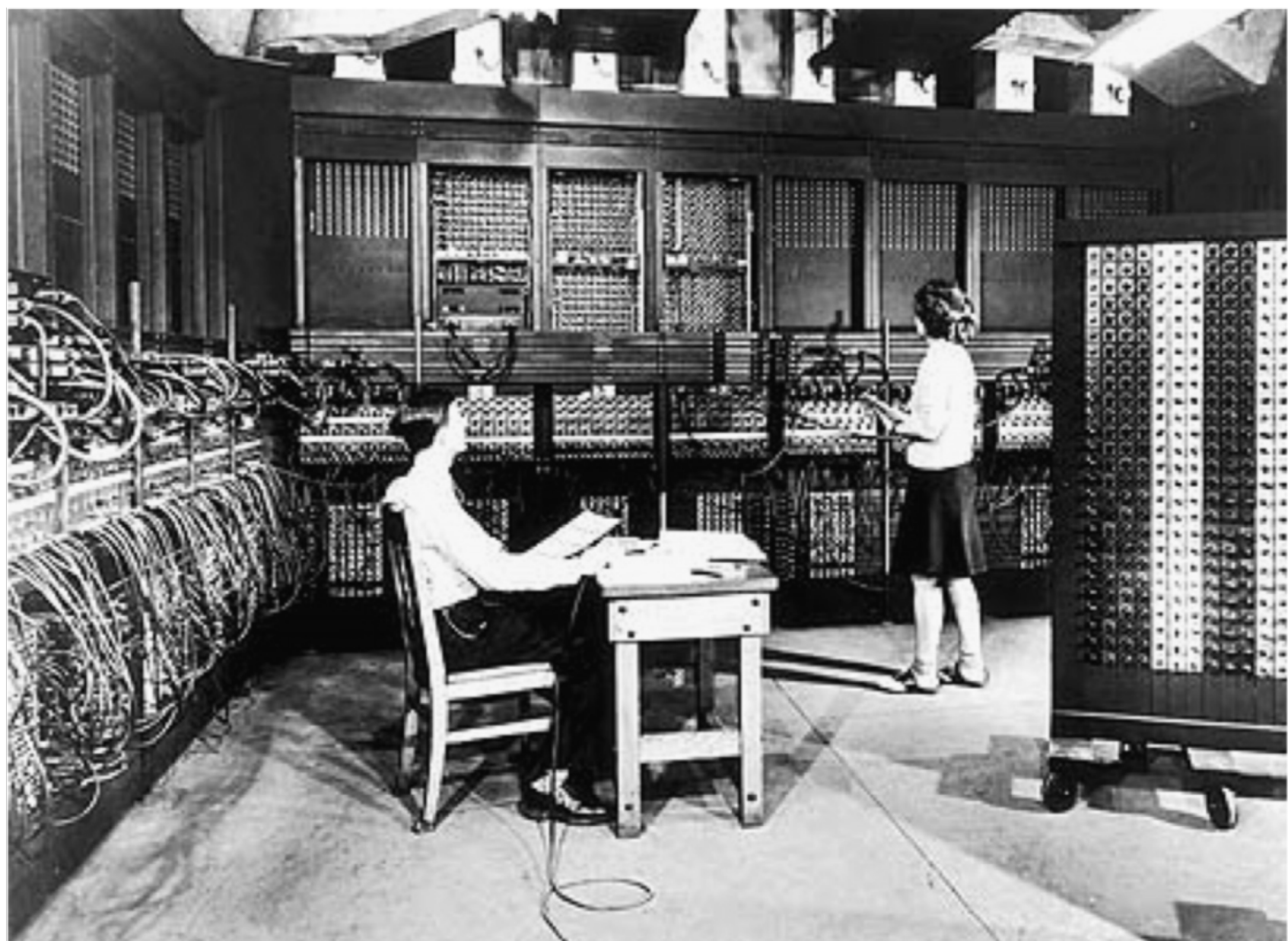
EARSC
European Association
of Remote Sensing
Companies



Google







Sentinel-2

earth observation satellite imagery gis natural resource sustainability disaster response

Description

The [Sentinel-2 mission](#) is a land monitoring constellation of two satellites that provide high resolution optical imagery and provide continuity for the current SPOT and Landsat missions. The mission provides a global coverage of the Earth's land surface every 5 days, making the data of great use in on-going studies. L1C data are available from June 2015 globally. L2A data are available from April 2017 over wider Europe region, planned to be expanded globally in July 2018.

Update Frequency

New Sentinel data are added regularly, usually within few hours after they are available on Copernicus OpenHub.

License

Access to Sentinel data is free, full and open for the broad Regional, National, European and International user community. View [Terms and Conditions](#).

Documentation

<http://sentinel-pds.s3-website.eu-central-1.amazonaws.com/>

Managed By

[Sinergise](#)

Contact

<https://forum.sentinel-hub.com/c/aws-sentinel>

Usage Examples

- [EO Browser](#) by [Sinergise](#)

Resources on AWS

Description

Level 1C scenes and metadata, in [Requester Pays](#) S3 bucket

Resource type

S3 Bucket

Amazon Resource Name (ARN)

`arn:aws:s3:::sentinel-s2-l1c`

AWS Region

`eu-central-1`

Description

[S3 Inventory](#) files for L1C

Resource type

S3 Bucket

Amazon Resource Name (ARN)

`arn:aws:s3:::sentinel-inventory/sentinel-s2-l1c`

AWS Region

`eu-central-1`

Description

Level 2A scenes and metadata, in [Requester Pays](#) S3 bucket



SENTINEL Hub

PLAYGROUND



2016-05-23



20 %



Guinea-Bissau



Rendering



Effects



Custom

Create custom rendering



Natural Color

Based on bands 4,3,2



Color Infrared (vegetation)

Based on bands 8,4,3



False color (urban)

Based on bands 12,11,4



Agriculture

Based on bands 11, 8A and 2



Atmospheric penetration

Based on bands 12,11,8A



Bathymetric

Based on bands 4,3,1



Geology

Based on bands 12,4,2



Moisture Index

Based on combination of bands (B8A - B11)/(B8A + B11)

REFRESH

GENERATE

3 km

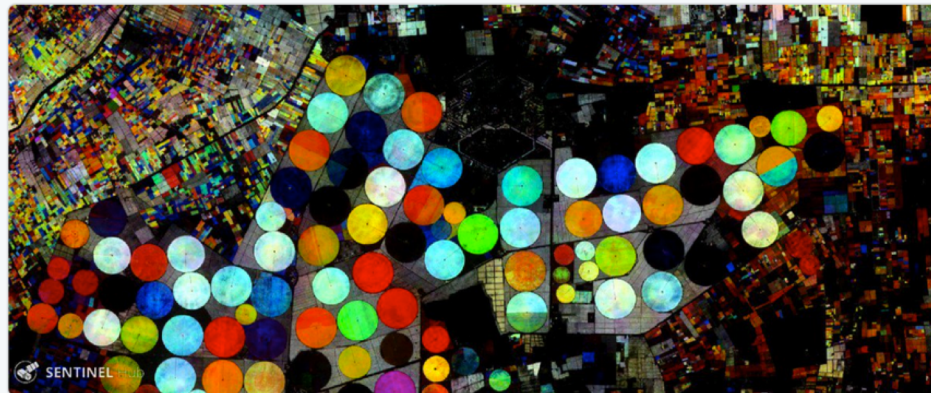


Leaflet | © OpenStreetMap contributors, © Sentinel layer contributors



HD @HarelDan · 24 Oct 2017

Tip: Blue field growing, Green fields maturing, Yellow Fields ripe, Red fields reaped/drying. Same place, 3 days ago apps.sentinel-hub.com/sentinel-playg...



4 5 20



Stef Lhermitte

@StefLhermitte

Following

Replying to @HarelDan @sentinel_hub and 4 others

Wow! The moment even my mom can classify petabytes in seconds on her very old computer is getting closer. Just need to teach her Javascript

8:14 AM - 25 Oct 2017

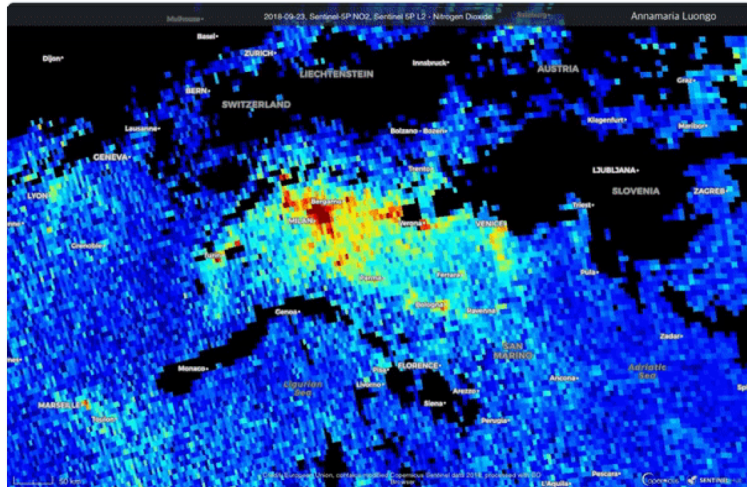
1 Retweet 9 Likes





annamaria @annamaria_84 · Sep 27

The breath (polluted by [#NO2](#)) of the [#Padana](#) Plain, north of [#Italy](#), from Sunday 23 September to Thursday 27 September 2018 (today). [#Sentinel5p](#) [@CopernicusEU](#) [@sentinel_hub](#) [@minambienteIT](#) [@ISPRA_Press](#)

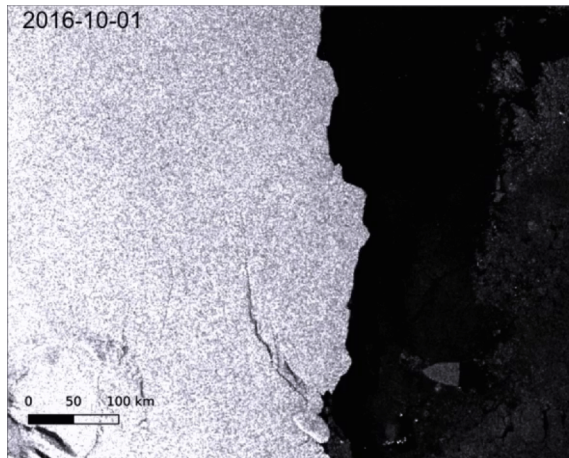


Simon Gascoin @sgascoin · Sep 18

[#LarsenC](#) The Movie 🎬 updated

Time lapse of 56 [#Sentinel1](#) extra wide swath images since 2016-10-01.

Iceberg [#A68](#) is leaving my bounding box!

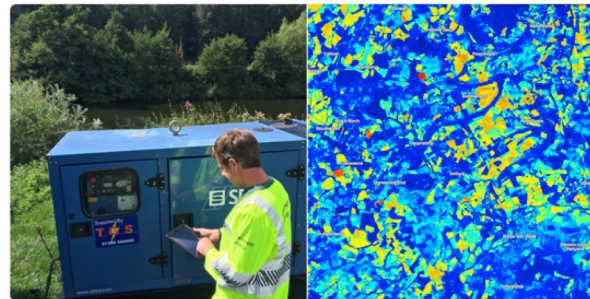


Dave Throup @DaveThroupEA · Aug 19

It might be Sunday morning but Environment Officers are on [#waterpatrol](#) along the [#herefordshire](#) Wye. Levels & flows still very low.

Visits targeted using latest [@CopernicusEU](#) [@sentinel_hub](#) imagery.

Checking pumps are legal & operating to licence conditions.



Simon Gascoin @sgascoin · Sep 24

New animation of Vavilov ice cap collapse, this time using [#Sentinel1](#) [@CopernicusEU](#) radar (no issue with clouds or polar night)
"You can literally watch an ice cap gut itself in front of your eyes"
quote by [@IceSheetMike](#), 2018
[@inrushmd](#)



Benjamin Strick @BenDoBrown · Sep 28

The birth of a drone base in Sahara's sandy plains at Dirkou, Niger.

Location: goo.gl/maps/lbAehXDbf...

More info: nytimes.com/2018/09/09/wor... [@sentinel_hub](#) [@CopernicusEU](#) [#drones](#) [#Niger](#)



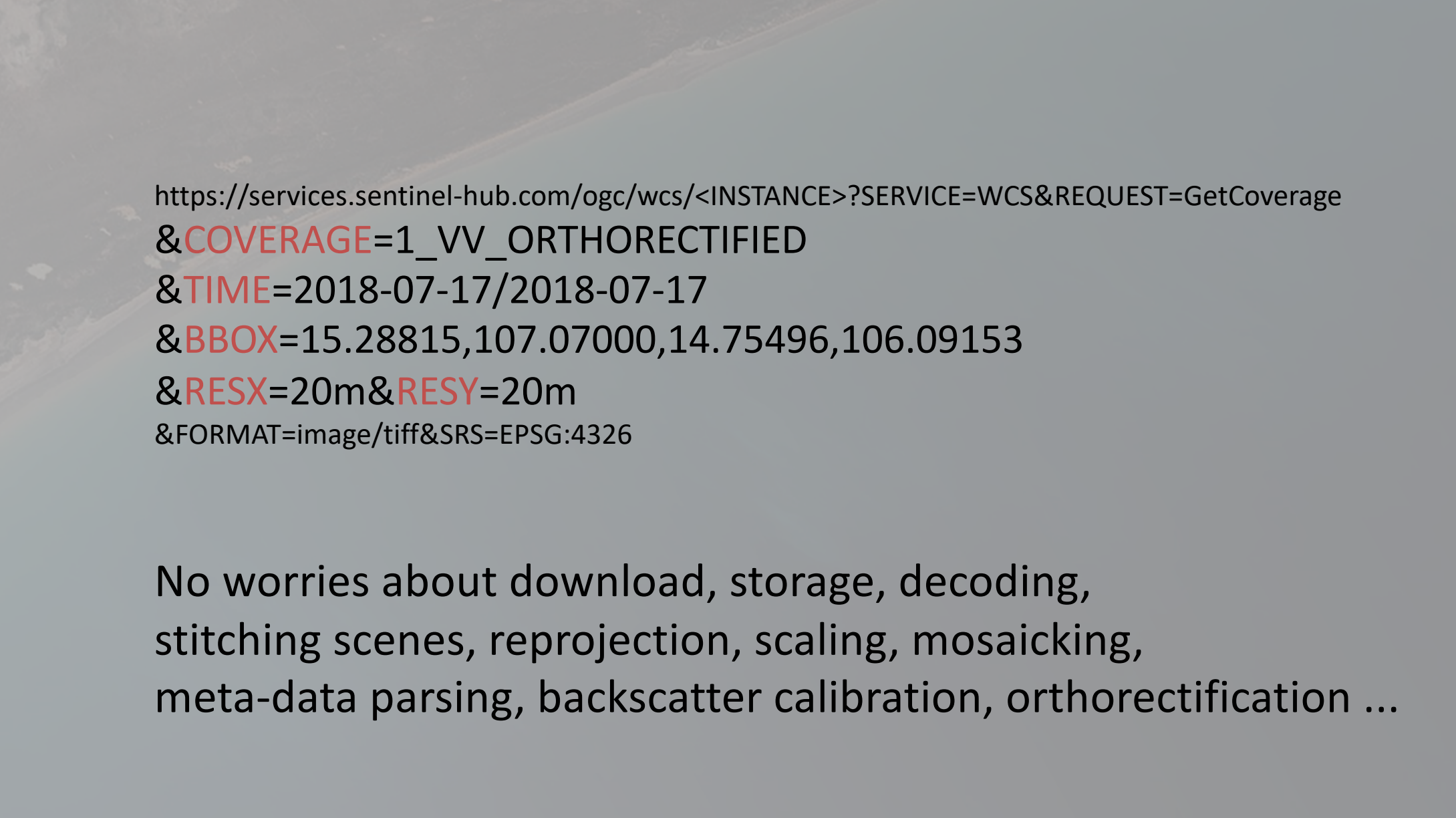
Zack Labe @ZLabe · Sep 14

Earth's art - runoff into Lake Turkana (Ethiopia/Kenya) located in Africa's Great Rift Valley. It is the 4th largest salt lake in the world and known for its greenish color ("Jade Sea").

[9 September 2018, Sentinel-2 satellite image]



You, ESA EarthObservation and Copernicus EU



[https://services.sentinel-hub.com/ogc/wcs/<INSTANCE>?SERVICE=WCS&REQUEST=GetCoverage
&COVERAGE=1_VV_ORTHORECTIFIED
&TIME=2018-07-17/2018-07-17
&BBOX=15.28815,107.07000,14.75496,106.09153
&RESX=20m&RESY=20m
&FORMAT=image/tiff&SRS=EPSG:4326](https://services.sentinel-hub.com/ogc/wcs/<INSTANCE>?SERVICE=WCS&REQUEST=GetCoverage&COVERAGE=1_VV_ORTHORECTIFIED&TIME=2018-07-17/2018-07-17&BBOX=15.28815,107.07000,14.75496,106.09153&RESX=20m&RESY=20m&FORMAT=image/tiff&SRS=EPSG:4326)

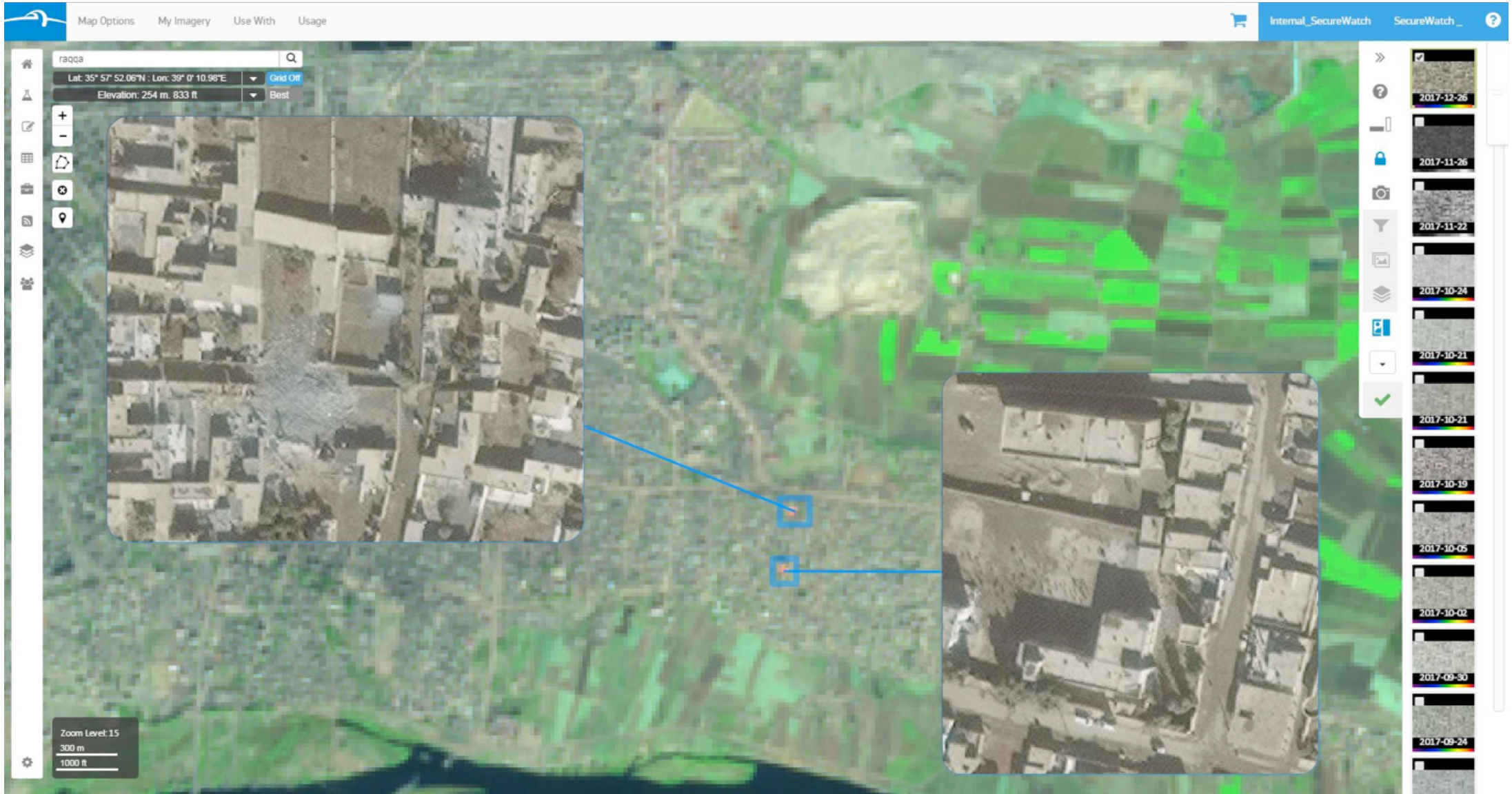
No worries about download, storage, decoding,
stitching scenes, reprojection, scaling, mosaicking,
meta-data parsing, backscatter calibration, orthorectification ...



Sentinel Hub plans let you access all open datasets and full imagery archive.

Select duration: Annually (discount) ▾

	GET STARTED	INDIVIDUAL NON-COMMERCIAL USE	INDIVIDUAL COMMERCIAL USE	APP DEVELOPERS & ENTERPRISE
Price	0 €	16.6 € / month <small>(billed as 199 € / year, VAT included)</small>	83.3 € / month <small>(billed as 999 € / year, without VAT)</small>	from 500 € / month <small>(Contact us)</small>
Download analytical data with EO Browser	✓	✓	✓	✓
OGC standard WMS / WCS / WMTS / WFS		✓	✓	✓
API for advanced features		✓	✓	✓
Configuration utility tool		✓	✓	✓
Requests per minute		20	20	100 .. ∞
Non-commercial use	✓	✓	✓	✗
Commercial use			✓	✓



No.	Id	Location	Crop	Field average
09-01	Holsterberg 1	farm	Lombardo	253
10-01	Holsterberg 2+3	farm	Lombardo	255
13-01	Katzbach	farm	DK Exception	252
11-01	Käseberg	farm	Lombardo	248
02-01	Milde	farm	/	249
12-01	Nordhang	farm	Mentor	250
08-01	Wietfeld	farm	RGT Reform	249
01-03	X-Blüh v.Hof	farm	Blühmischung	N/A
01-02	v.Hof	farm	DK Exception	250
03-03	vorn Eichkopf	farm	KWS Keops	250
207.0	x-Grü Nordhang	farm	/	259

Show all

Variable rate application automatic mode

Unit: kg/ha

Strategy: quality

Avg. (kg/ha): 250

+ / - (kg/ha): 40

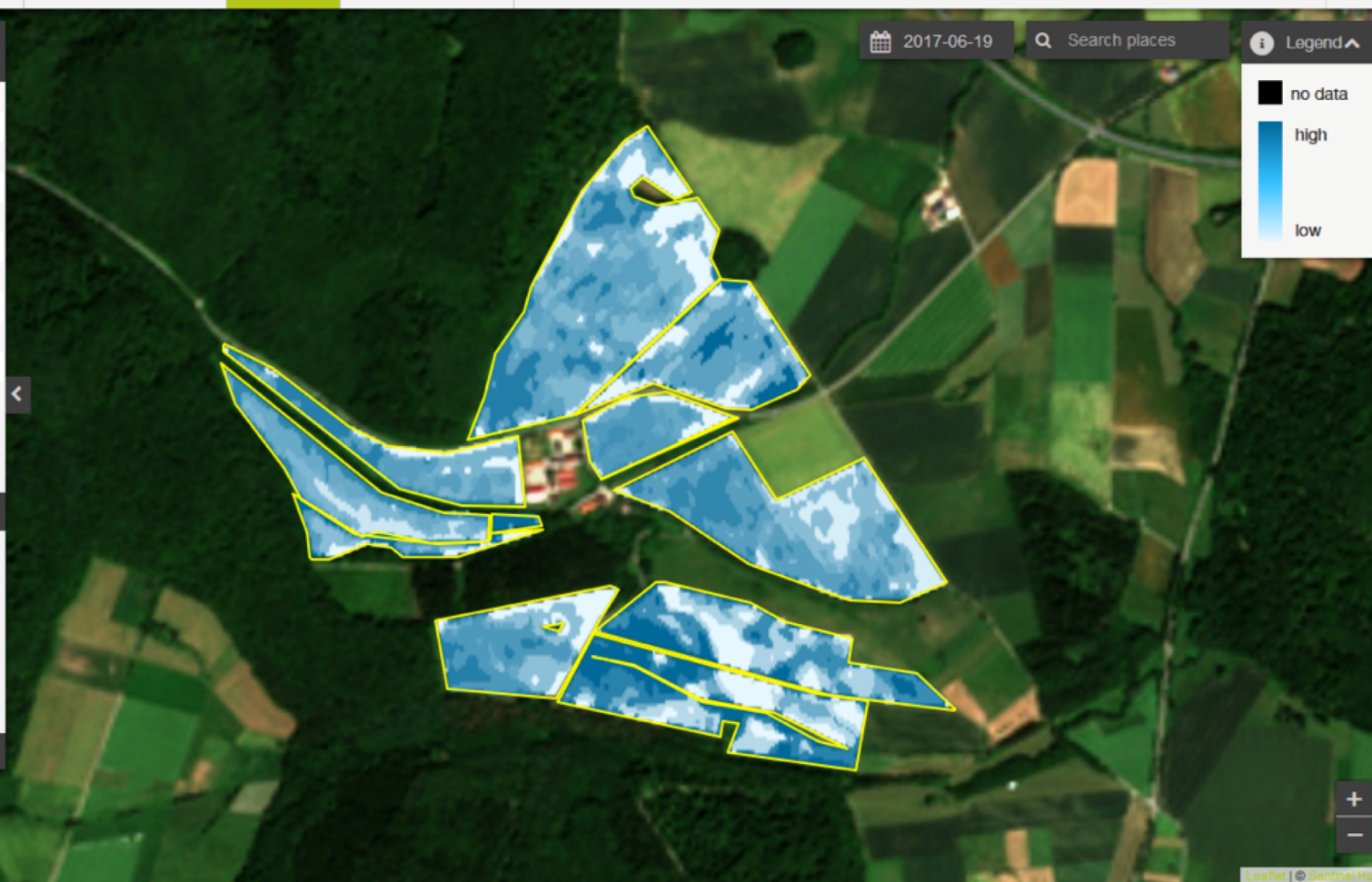
Total (kg/ha): 2519

Save config Recalculate Download Hide



Satellite

200 m





Simon Gascoin

@sgascoin

Following



Because of you @sentinel_hub my timeline is flooded by #Sentinel2 gifs! You just ruined my old-fashioned bash scripts! 🙄🙄😏😏



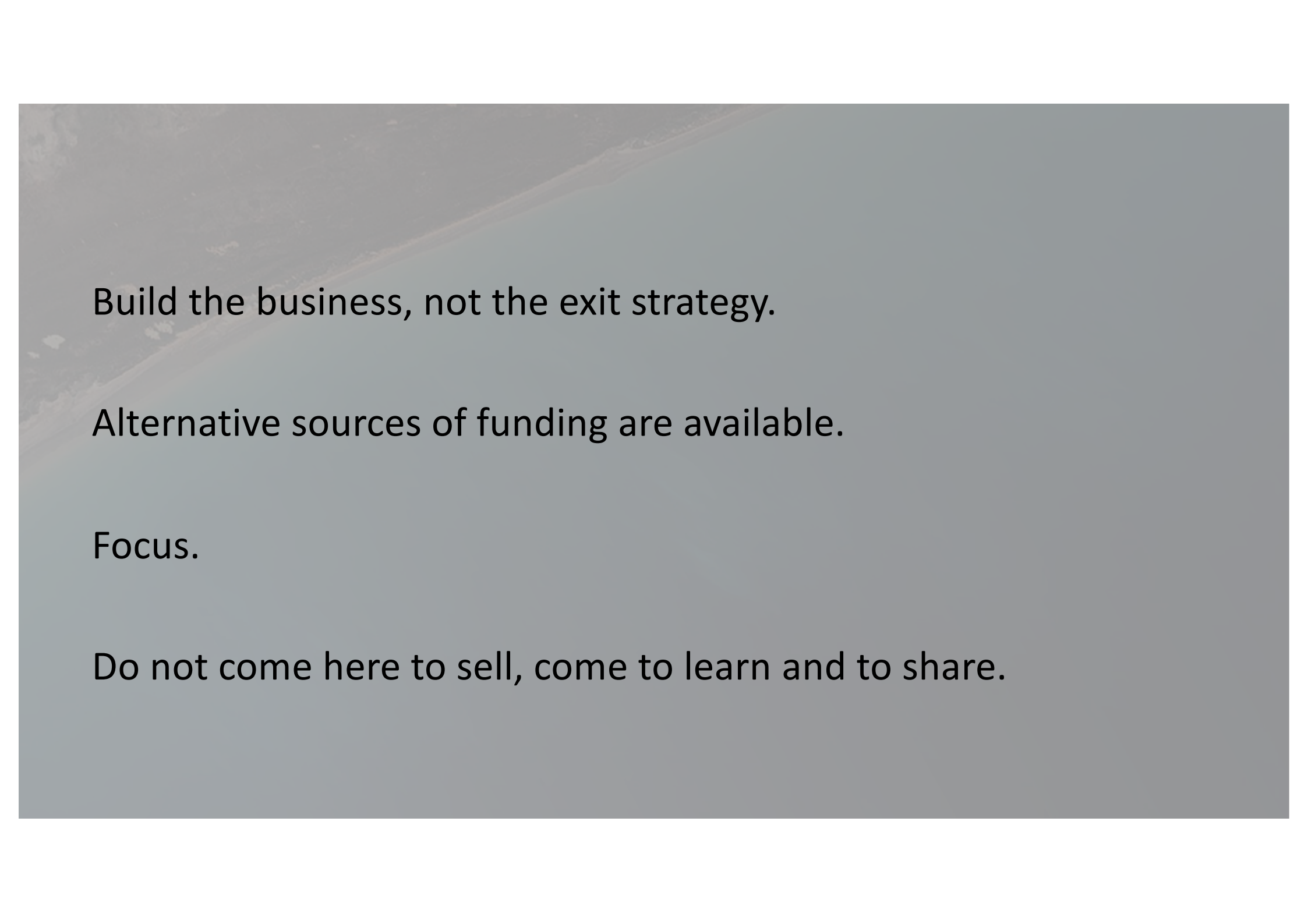
Ørjan H.H. Vøllestad @hoyd

Tromsø, Norway from last April up until today using #Sentinel2 satellite imagery. @CopernicusEU @sentinel_hub @VisitTromso

10:23 PM - 8 Apr 2018

5 Retweets 19 Likes



An aerial photograph of a coastline, showing a road running parallel to a sandy beach and the ocean. The image is faded and serves as a background for the text.

Build the business, not the exit strategy.

Alternative sources of funding are available.

Focus.

Do not come here to sell, come to learn and to share.

