



SINERGISE

Geopedia.si

A non-governmental initiative in NSDI

Grega Milčinski
grega.milcinski@sinergise.com



About Sinergise



Geopedia.si – a non-governmental initiative in NSDI, NSDI 2011

About Sinergise

The screenshot displays the Sinergise web application interface. On the left, a sidebar titled "СИЗП" (SIZP) contains a search bar and a list of layers (СЛОЕВИ) including "ОРТО ФОТО", "ТОПО", "КАТАСТАР - РАСТЕР", "КАТ. ОПШТИНИ", "ОПШТИНИ", "ГРАНИЦА", "КАТАСТАР", and "СИЗП". Below the layers list is a legend (ЛЕГЕНДА ЗА КОРИСТЕНО ЗЕМЈА). The main map area shows a topographic map with a red boundary. A detailed view of a specific parcel (Case 481, Parcel 1602060045) is shown in the center, displaying its general information (ID, PIN, Block, Type, Source, Owner, Deed Area, GIS Area, Boundary length, Notes, Date From, Date To, Lock, Status, Active, Case) and a list of documents (Deeds and LS Plans, Adjoining Parcels and Roads, Points and Edges, History). A pop-up window titled "Urejanje: Gorska pot-Uskovnica - Konjščica - Zajamniki" provides details about a specific trail, including its name, type, length, starting point, and two photographs. The bottom right corner shows a map view with a red line indicating the trail route.

СИЗП

Податоци ПРЕБАРУВАЊЕ

БРЗО ПРЕБАРУВАЊЕ

СИЗП

СЛОЕВИ

- ☒ ОРТО ФОТО
- ☐ ТОПО
- ☐ КАТАСТАР - РАСТЕР
- ☐ КАТ. ОПШТИНИ
- ☒ ОПШТИНИ
- ☒ ГРАНИЦА
- ☐ КАТАСТАР
- ☒ СИЗП

ЛЕГЕНДА ЗА КОРИСТЕНО ЗЕМЈА

© 2011 Министерство за земјоделство и водостопанство

Case 481 Parcel 1602060045

General

ID: 330897
PIN: 1602060045
Block: 160206 (Bois Cheri)
Type: Morcellement Plan
Source: Morcellement Plan
Owner:
Deed Area:
GIS Area: 318.43 m²
Boundary length: 71.42 m
Notes:
Date From:
Date To:
Lock: true
Status: LIVE
Active: true
Case: 481 (Owner: Marko Trebizan)

Unlock Seed

Documents (0)

- Deeds and LS Plans (0)
- Adjoining Parcels and Roads
- Points and Edges
- History

Geopedia - Beta - Mozilla Firefox

File Edit View History Bookmarks Tools Help

http://www.geopedia.si/

Geopedia - Beta

Iskanje: IŠČI

Prijavljeni ste kot: grega | Odljava
3D | Natisni | (Y,X) | Portal | Pomoč

Geodetska uprava Republike Slovenije

Ortofoto Višine Relief Topo

Urejanje: Gorska pot-Uskovnica - Konjščica - Zajamniki

Ime poti: Uskovnica - Konjščica - Zajamniki
Vrsta poti: Gorska pot
Čas poti: 4 ure
Izhodišče: Ribčev Laz (brezplačni p. nasproti hotela Kristof)
Vrsta podlage: kolovoz, makedam, asfalt
Težavnost: težka

Slika 1:

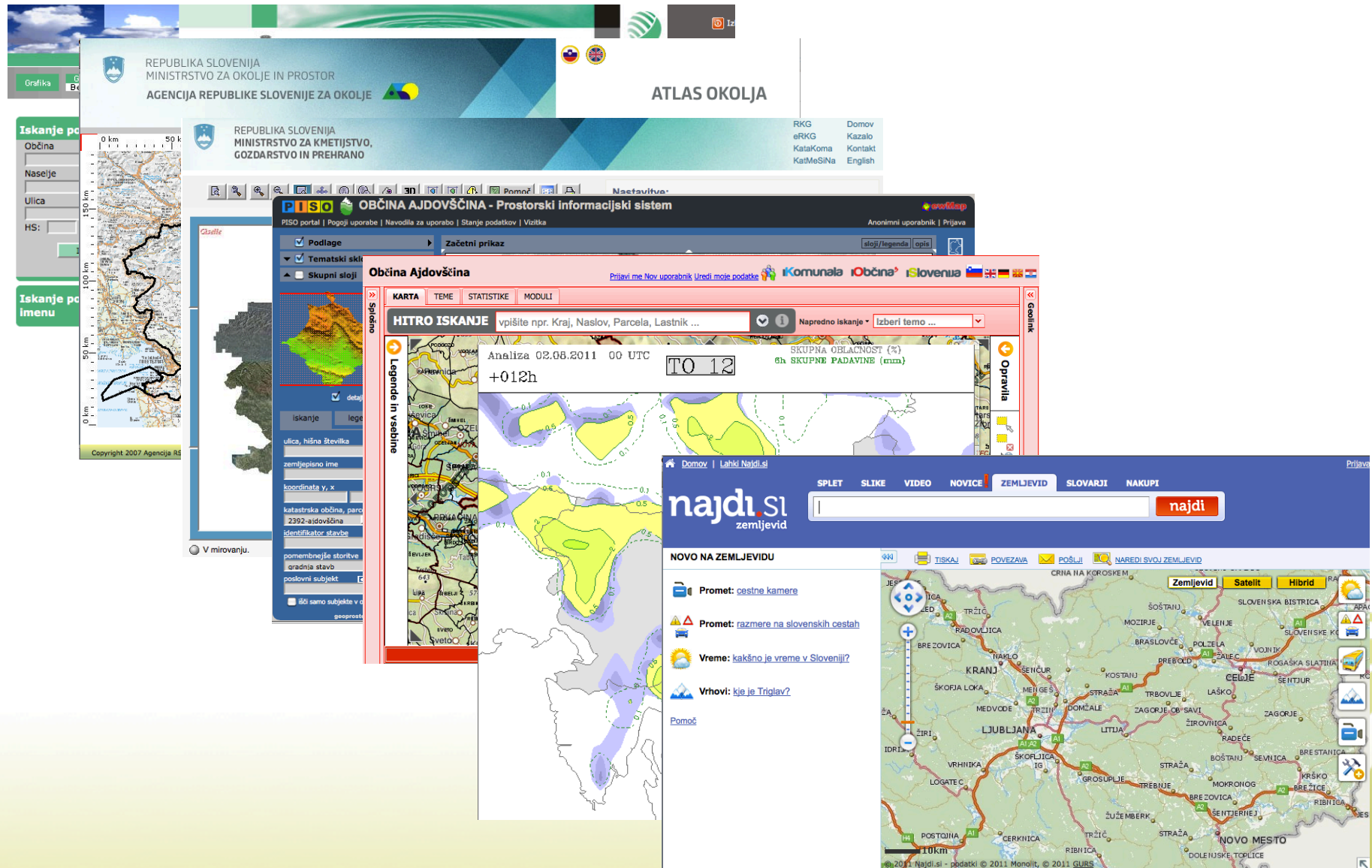
Slika 2:

Prekliči Shrani

About Sinergise

- 8 years in GIS
- 20 people, mostly programmers
- Governmental Solutions
 - Real-estate Management
 - Agriculture – IACS
- We run GIS in Slovenia and going outwards
 - 2008 - IACS in Croatia
 - 2009 – Real Estate in Africa
 - 2010 – IACS in Macedonia
- Geopedia.si running since 2007


State of GIS data in Slovenia (2007)





Geopedia.si – a non-governmental initiative in NSDI, NSDI 2011

How to get some data – recipe

- Information about neighbor's parcel?

**Parcele**

Katastrska občina	Številka parcele	Površina (m2)	Številka ZKVL	Urejena parcela	Vrednost nepremičnine	Grafični prikaz	
1722 TRNOVSKO PREDMESTJE	23/5	464	16	NE	€		

Legenda: ☒ Podatki Registra nepremičnin ☐ Podatki Zemljiškega katastra

Katastrska občina 1722 Številka parcele 23/5

Podrobni podatki o parceli

VRSTA RABE / KULTURE	KATASTRSKI RAZRED	POVRŠINA (M2)	ŠTEVILKA STAVBE NA PARCELNEM DELU (PARCELI)
DVORIŠČE	0	464	0

DEJANSKA RABA

Pozidano zemljišče

POVRŠINA (M2)

464

NAMENSKA RABA

Ni podatka

POVRŠINA (M2)

BONITETA

0

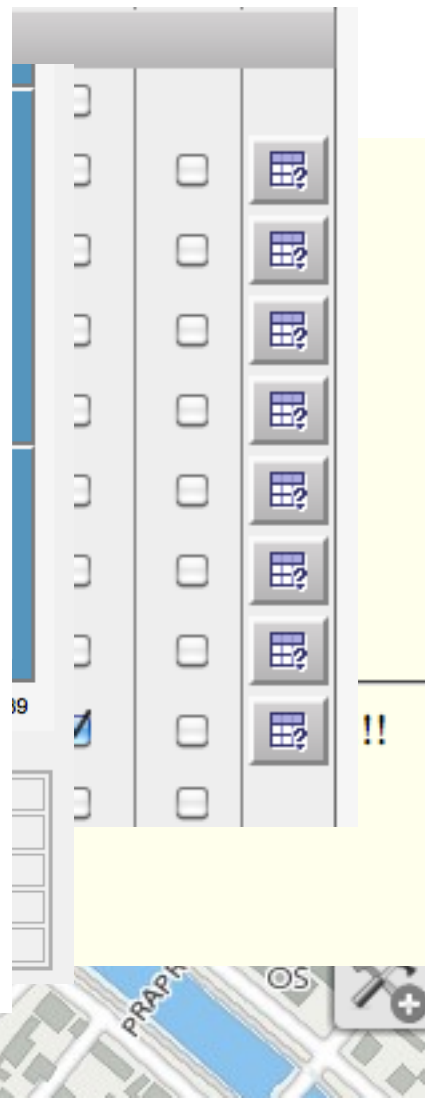
POVRŠINA (M2)


464

NAČIN SPRAVILA LESA

RAZDALJA (M)

Ni podatka



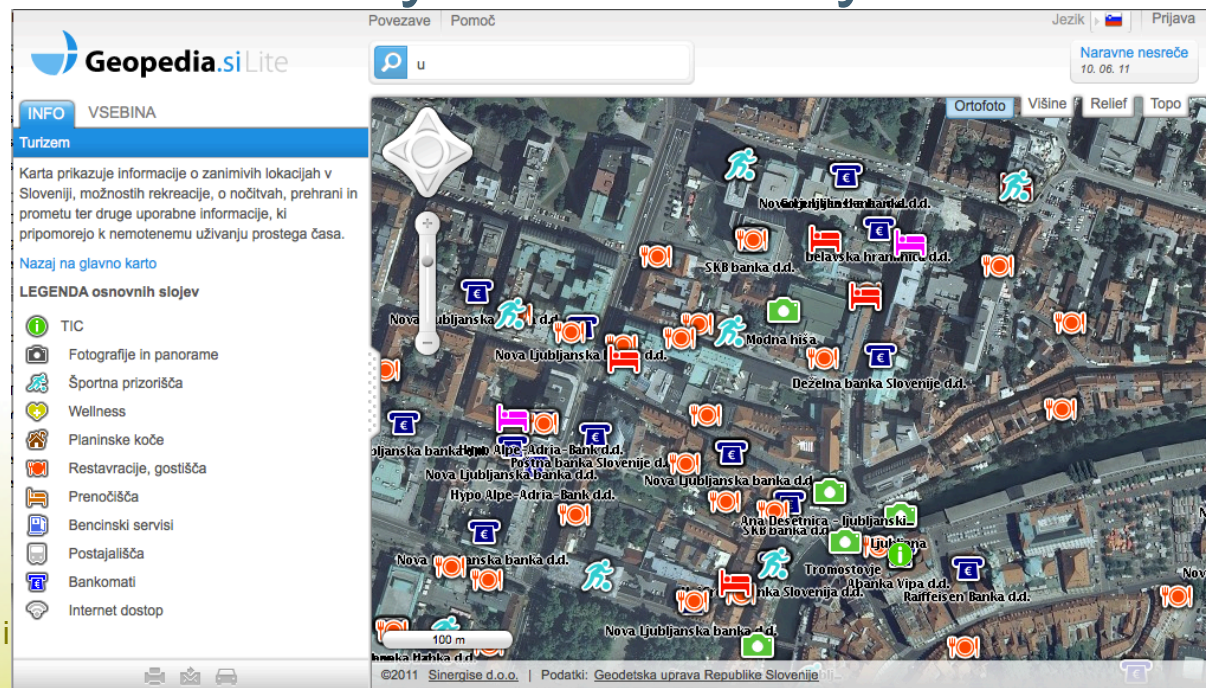


Geopedia.si – a non-governmental initiative in NSDI, NSDI

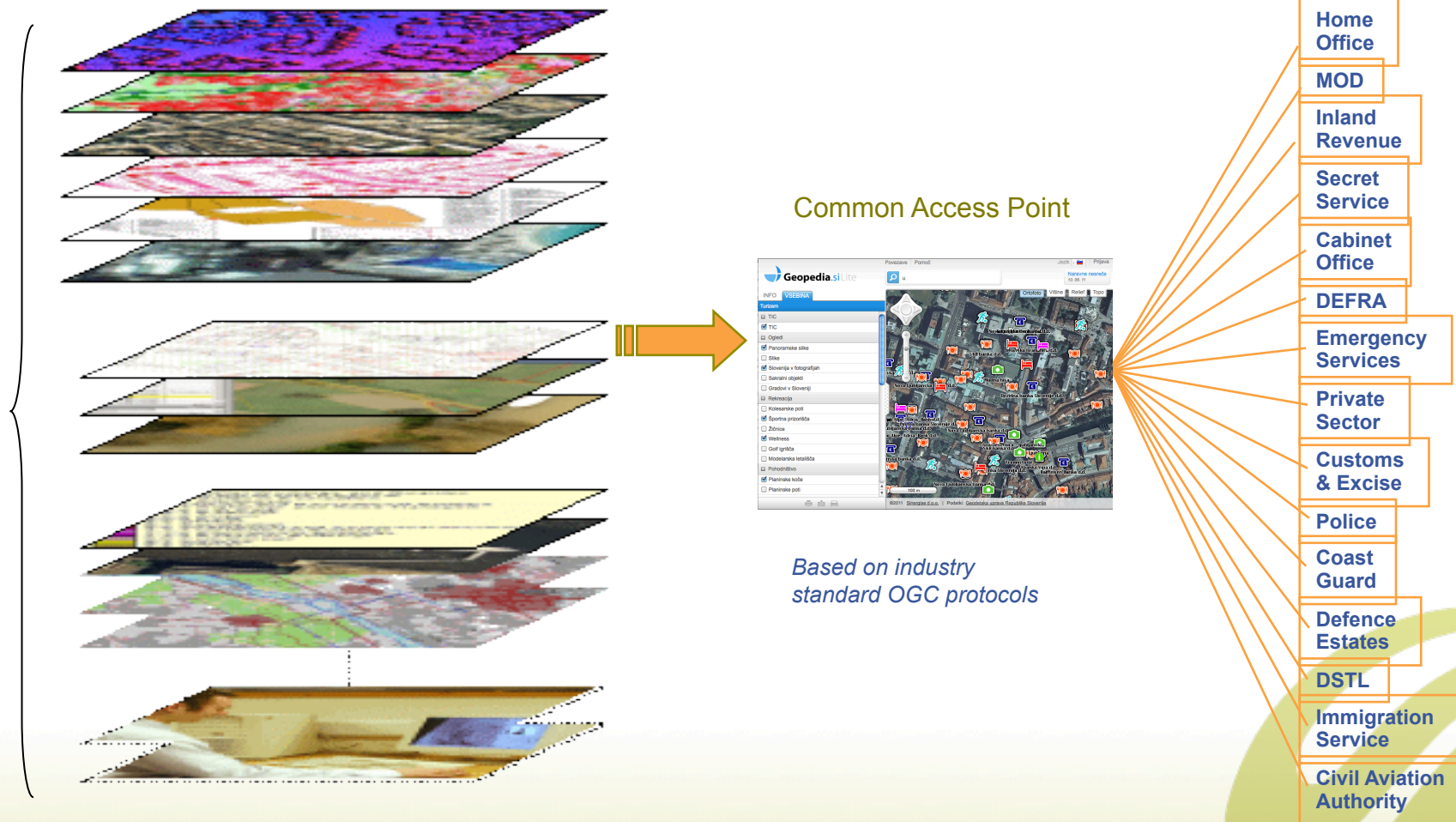
How to get some data

- Comparison of data from two different organizations
- Several datasets only in table format (house addresses)
- ...

- Idea: gather all spatial data in one place
- Web-based GIS viewer and editor
- Limited to Slovenia
- Users can create their own layers on-the-fly

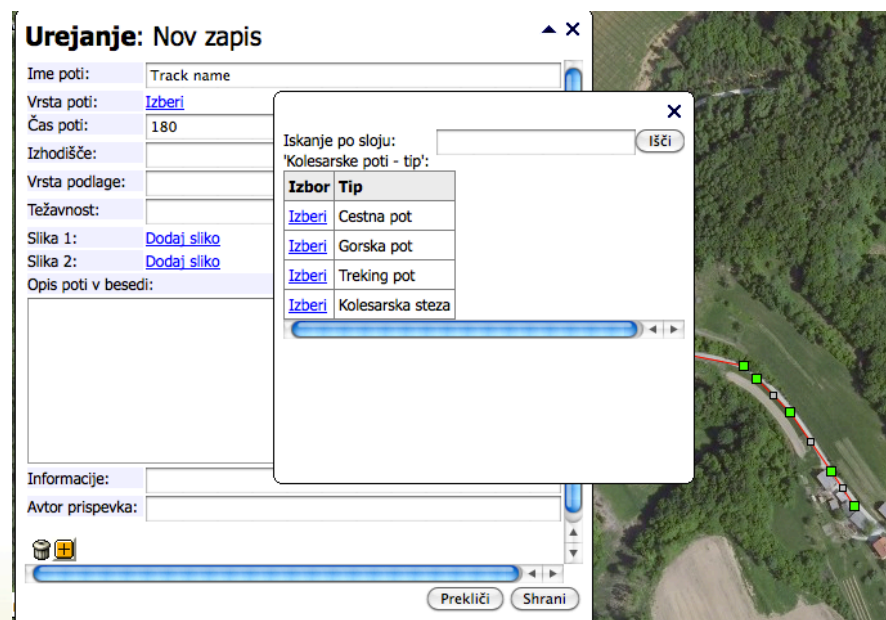
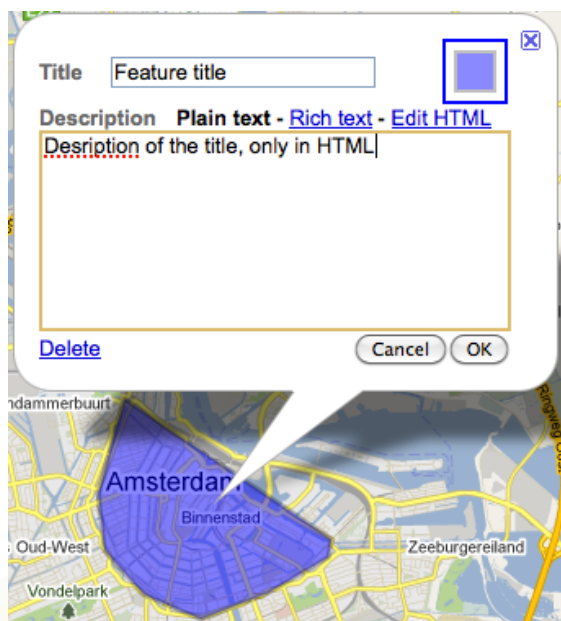


Geopedia.si – SDI



Geopedia.si – Quality of data

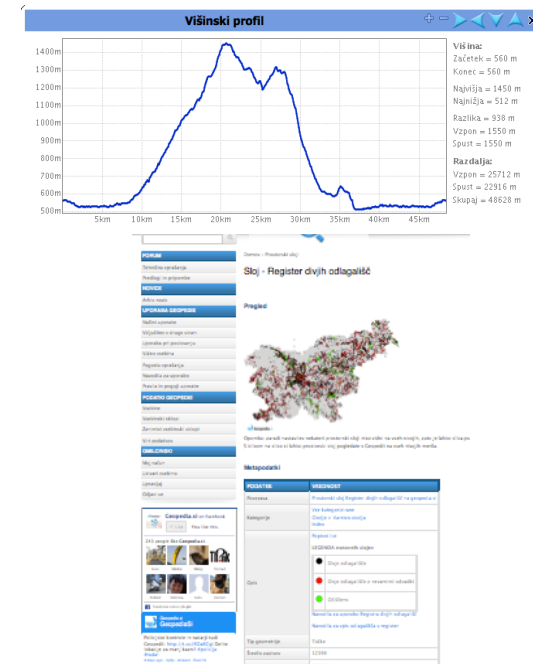
- GIS Editing = control over input data, not common free text



Geopedia.si – tools & services

■ Tools

- find, view and edit point/line/polygon
- elevation profile
- intersections of spatial data

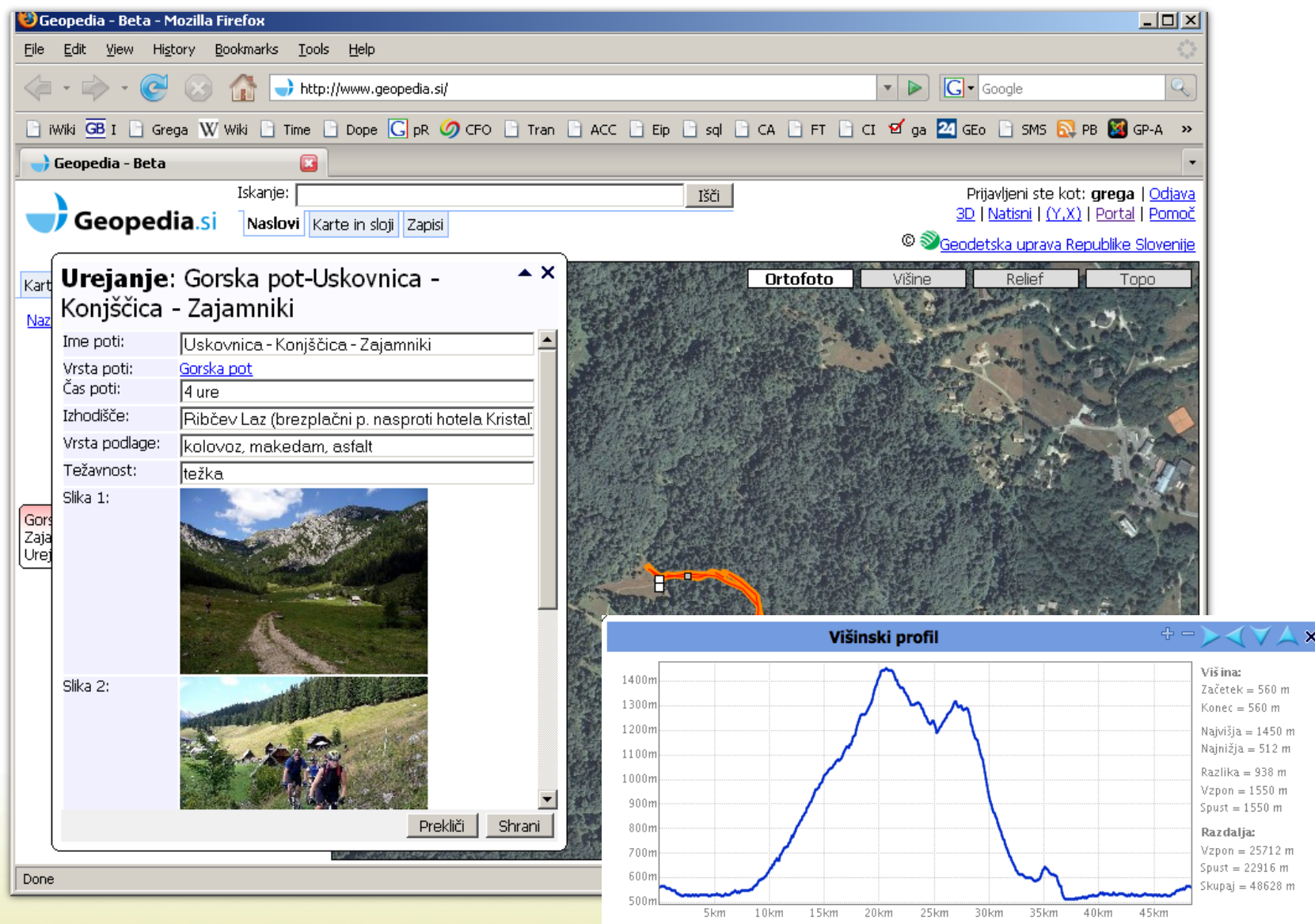


■ Services

- import/export SHP/GPX/CSV
- WMS service
- Meta-data directory
- ingestion of real-time data

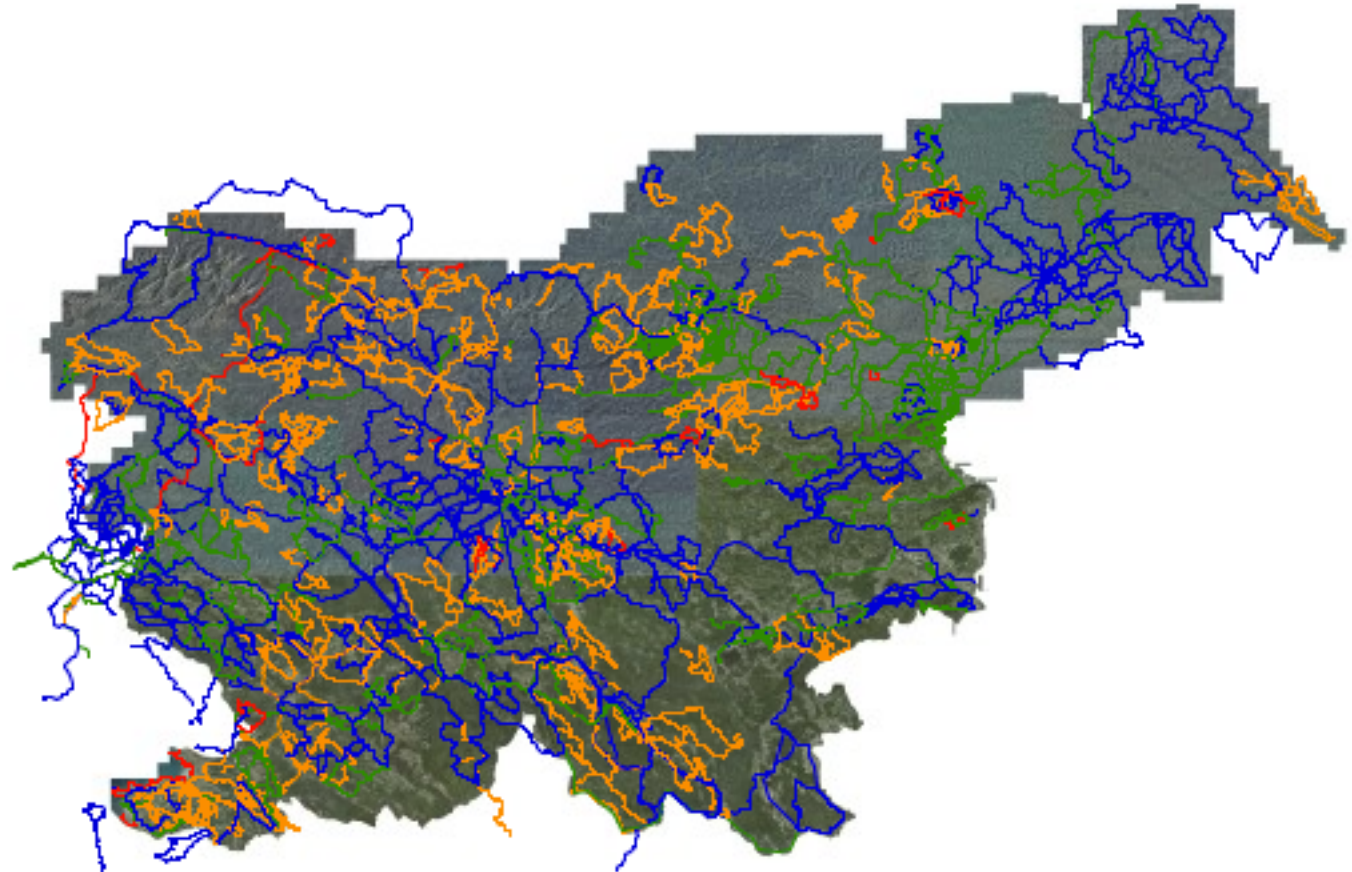


Geopedia.si – cycling




Geopedia.si – cycling

- 900 paths
- 30.000 km






Geopedia.si – illegal dump-site registry


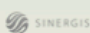


REGISTER DIVJIH ODLAGALIŠČ


Pozdravljeni na Registru divjih odlagališč. Uporabite spodnje povezave za iskanje ali prijavo divjega odlagališča. Več informacij o popisu divjih odlagališč dobite na www.očistimo.si.

-  **PREIŠČI REGISTER**
-  **PRIJAVI ODLAGALIŠČE**
-  **DOSTOP ZA ČLANE**
-  **IZVOZI PODATKE**

Pozdravljeni, [Prijava se](#) | [Registracija?](#)


 

Interaktivna karta za iskanje in prijavo divjega odlagališča



Ortofoto Višine Relief Topo

Links Help

Language  Login

Karta potresne nevarnosti 3/14/11

Geopedia.si Lite

INFO CONTENT RESULTS

Lega > [Ravnina](#)

Površina [m2] > 2500

Prostornina > 500-1000m3 (100 avtomobilov)

Organski odpadki % > 0

Gradbeni odpadki % > 85


Komunalni odpadki % > 0

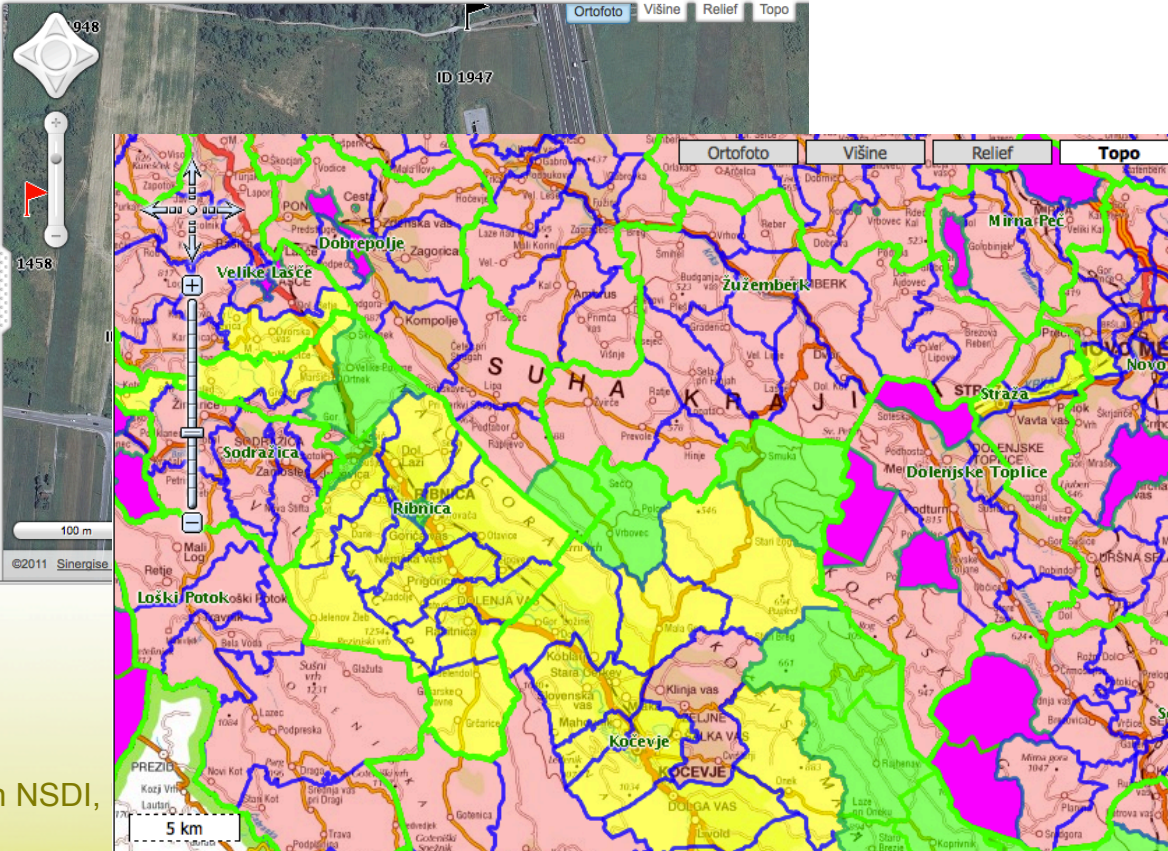
Kosovni odpadki % > 0

Nevarni odpadki % > 15

Opis in količina nevarnih odpadkov > Veliko salonitnih plošč, asfalt.

Opombe > To je območje bивše gramozne jame. Sedaj so tu ogromne količine gradbenih odpadkov (beton). Za očiščevanje bi bili potrebni bagri. Poleg tega so odpadki posejani vse okoli v krogu 200 m.

Fotografija > 



Ortofoto Višine Relief Topo

ID 1947

1458

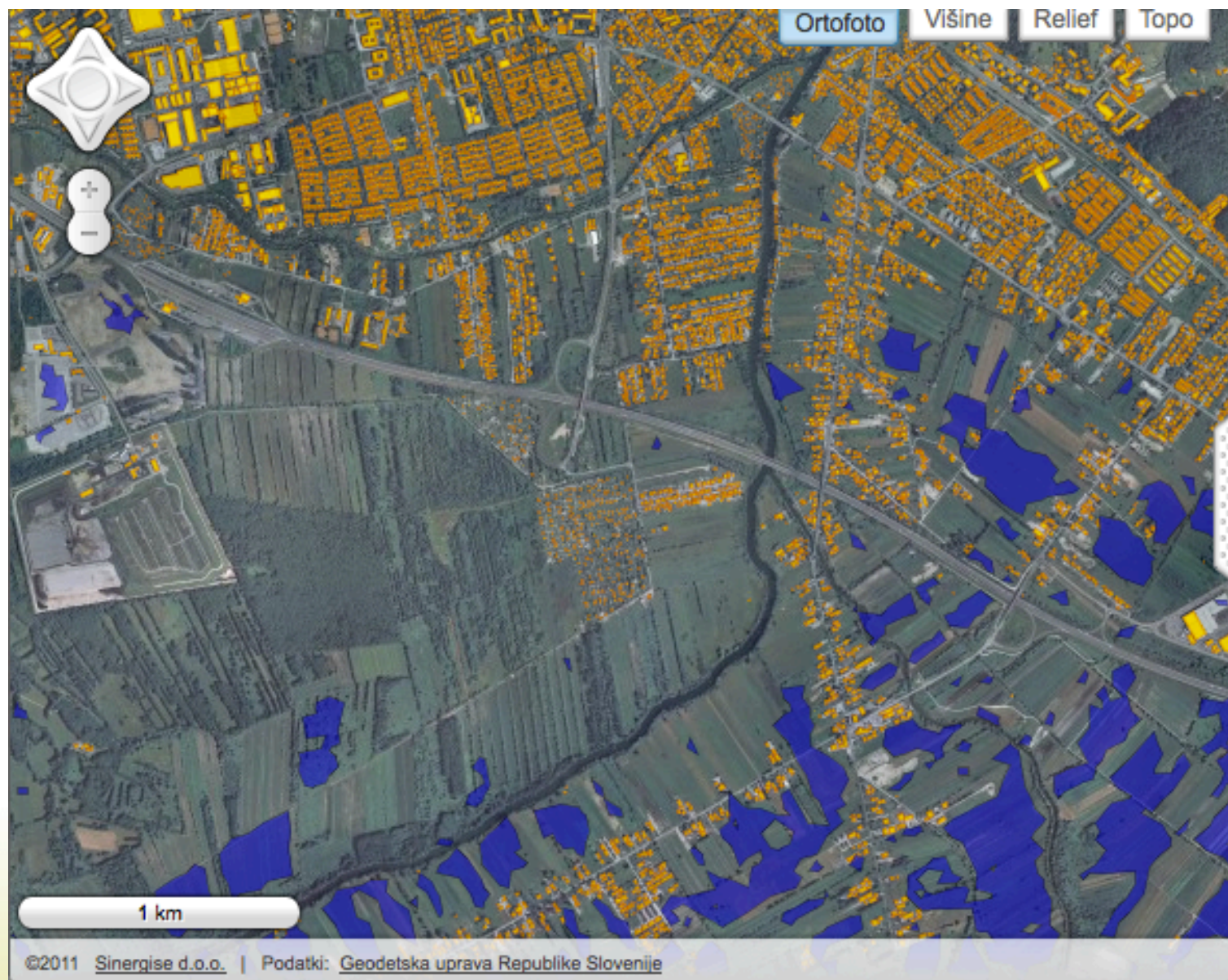
100 m

©2011 Sinergise

5 km

Geopedia.si – a non-governmental initiative in NSDI,

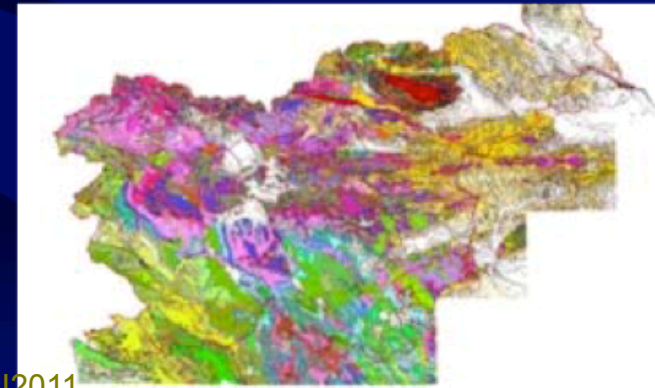
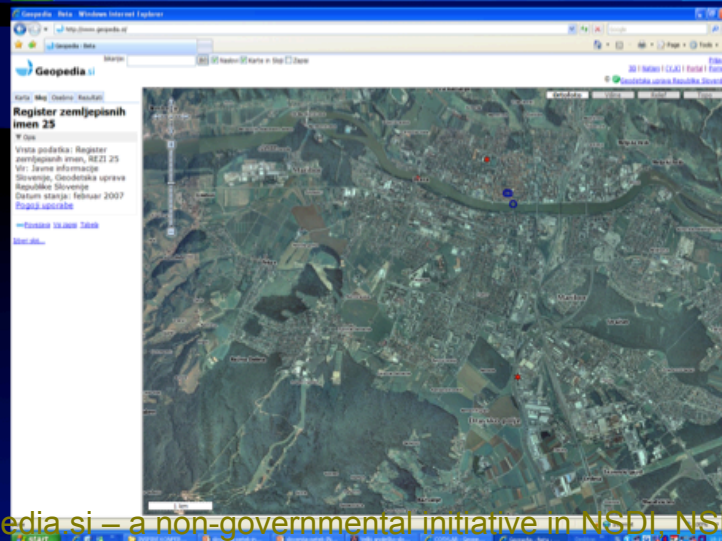
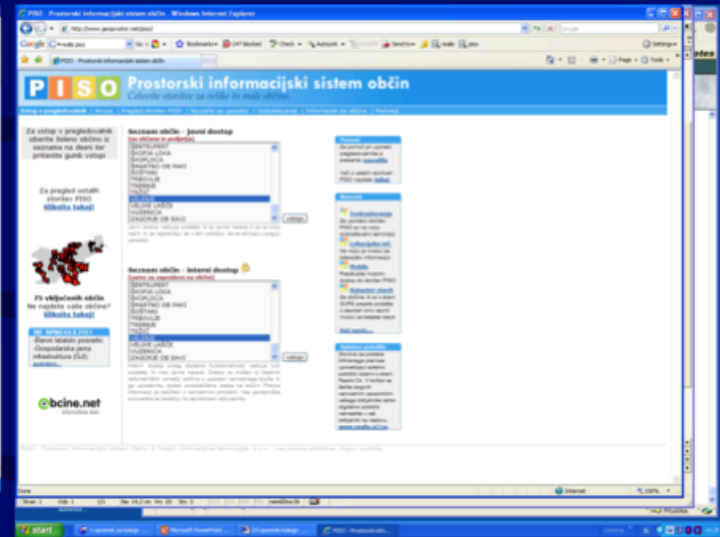
Geopedia.si – floods



Geopedia.si – a non-governmental initiative in NSDI, NSD I2011

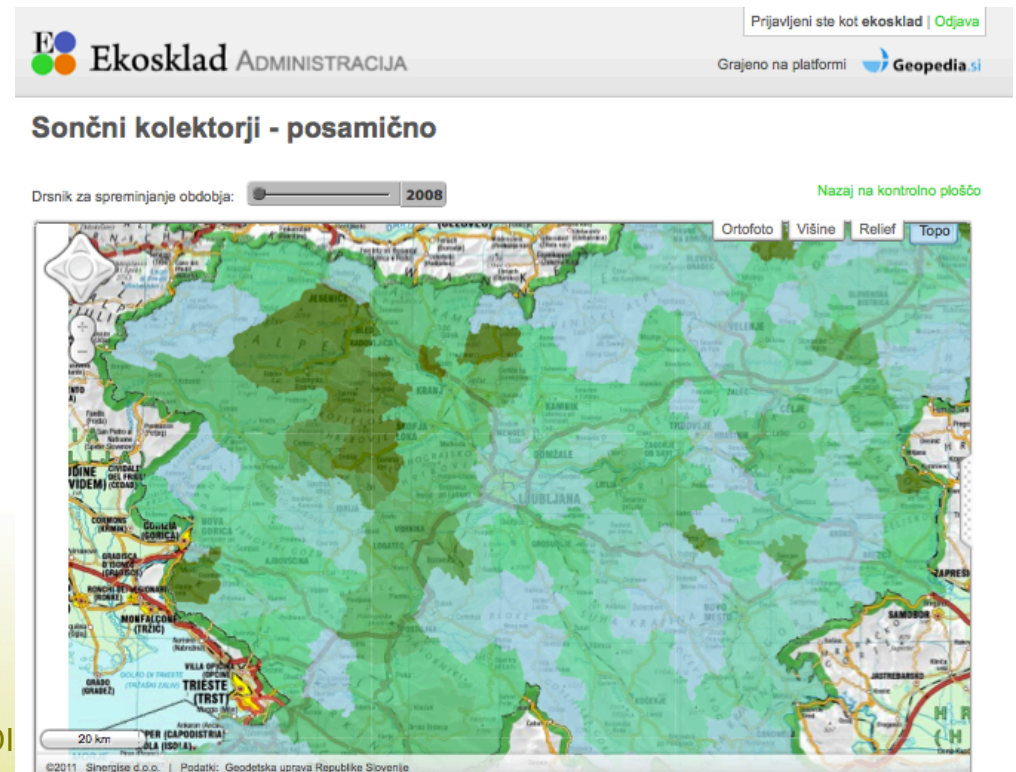


The screenshot shows a Windows Internet Explorer browser window. The address bar displays 'http://www.ibge.gov.br'. The page content is from the IBGE website, specifically the 'Rio São Francisco' (Rio São Francisco) data page. The page features a map of the river and a list of data series. The browser's status bar at the bottom shows the Windows taskbar with various icons and the system clock.



Geopedia.si – governmental use

- full Geopedia infrastructure (applications)
- integration within their pages
- services (WMS, geocoding)
- data



Geopedia.si – a non-governmental initiative in NSDI, NSDI

Geopedia.si – usage summary

▪ Users

- 620.000 unique visitors (2010)
- 15.000 contributors

▪ Customers

- Ekosklad, Ministry for economy, Geodetski inštitut Slovenije, EBM, Ministry for social affairs, RTV Slovenija, NAVTEQ, Ministry for environment,...

▪ Stats

- 150.000 monthly visits (3 MIO page-views)
- average time on site – 8 minutes
- 10.000 spatial layers (1000 of sufficient quality for general use)
- 10 MIO of spatial entries

Summary

- (largest?) SDI in Slovenia (in terms of unique users)
- toy project (by revenues not self-sufficient)
- good enough for serious use
- private initiative motivates to follow users' expectations

Geopedia.si – a non-governmental initiative in NSDI, NSDI 2011



Thank you



Questions?

Rise of Volunteered Geographic Information (VGI)

Michael Jones, Google:



The chief Internet evangelist at Google Inc., and one of the founding fathers of the Internet, says he'd like to see a geographic equivalent of Wikipedia — “Geopedia,” he dubs it — where anyone could add to the world’s geographic know-how.

Jack Dangerman, ESRI:



He worries that even the best-intentioned amateur could provide inaccurate data that could lead to a disaster. “Who wants to dig a hole and run into a pipe?” Dangerman asks.

(GeoWeb, summer 2007)